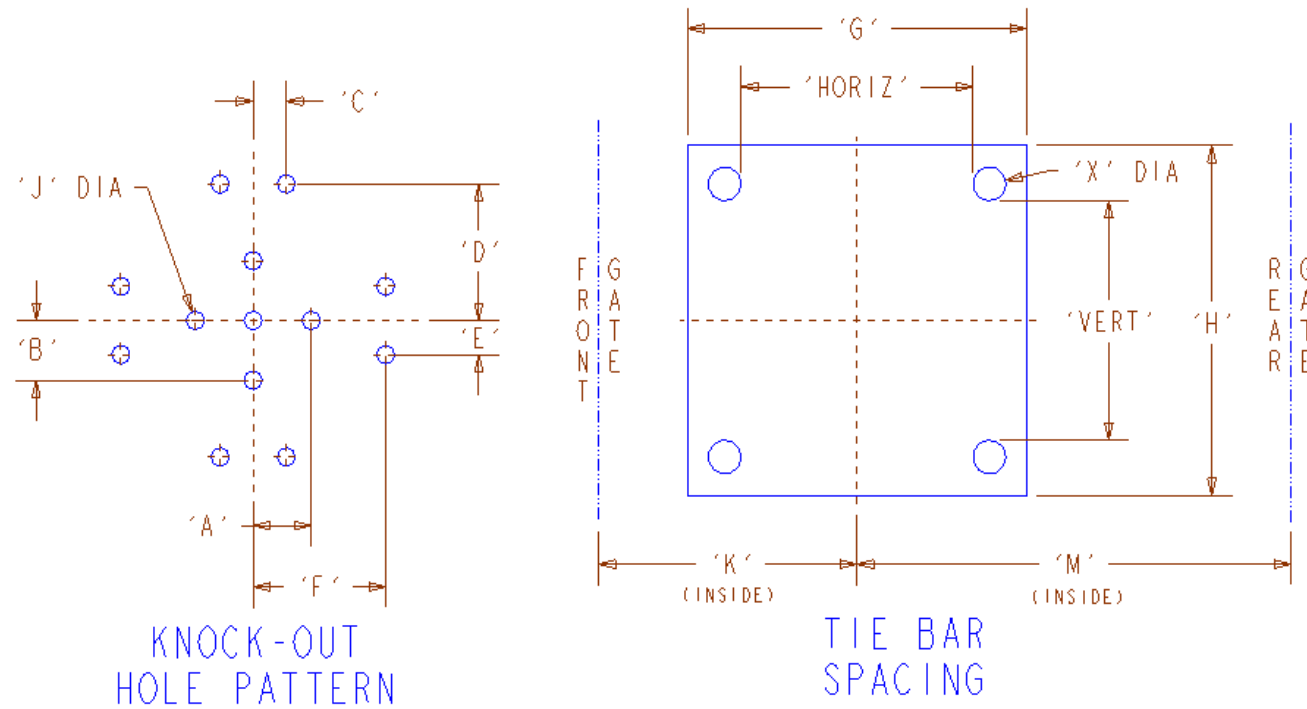


Press	Tonnage	SHOT SIZE	SHOT SIZE		A	B	C	D	E	F	G	H	J Dia	K	M	X Dia	Tie Bar Spacing		Mold Height		Open Day-Light	Clamp Stroke	Eject. Stroke	
																	Horiz	Vert	Min.	Max				
JSW	40	0.80 oz	23 gram	INCH	Center Knockout							15.5	15.5	1.00	14.0	18.9	1.97	10.2	10.2	5.9	9.8	18.9	9.1	2.0
				MM																				
Toshiba (2)	65	1.76 oz	50 gram	INCH	3.5	3.5						22.4	21.9	1.00	19.3	21.1	2.36	14.8	12.6	5.9	14.6	26.4	11.8	4.2
				MM	88.90	88.90																		
Toshiba	85	1.76 oz	50 gram	INCH	3.5	3.5						22.4	21.9	1.10	19.3	21.1	2.36	14.8	14.2	5.9	14.6	26.4	11.8	4.2
				MM	88.90	88.90																		
Toshiba	85	.56 oz	16 gram	INCH	3.5	3.5						22.8	20.9	1.06	18.4	21	2.36	16.1	14.2	5.9	18.5	30.3	11.8	2.8
		2.65 oz	75 gram	MM	88.90	88.90																		
Toshiba (2)	110	2.65 oz	75 gram	INCH	3.5	3.5						26.0	24.0	1.06	22.3	21.5	2.76	18.1	16.1	7.1	17.7	31.5	13.8	3.5
				MM	88.90	88.90																		
Toshiba	110	2.65 oz	75 gram	INCH	3.5	3.5						26.0	24.0	1.06	19.7	22.4	2.56	18.1	16.1	7.1	21.7	35.4	13.8	4.8
				MM	88.90	88.90																		
Arburg	110	5.09 oz	144 gram	INCH	3.5	3.5						26.4	26.4	0.98	22.0	27.953	2.36	18.5	18.5	9.8	19.7	33.5	13.8	6.9
				MM	88.90	88.90																		
JSW	180	4.30 oz	122 gram	INCH	3.5	3.5			2.0	8.0	33.0	30.5	1.20	22	27	3.74	23.3	20.9	7.9	19.7	37.4	17.2	5.5	
				MM	88.90	88.90																		
Haitian	225	10.72 oz	304 gram	INCH	3.5	3.5			2.0	8.0	31.1	31.1	1.50	22	25	3.54	20.9	20.9	7.9	21.7	40.9	19.3	8.3	
				MM	88.90	88.90																		
Haitian	281	18.30 oz	519 gram	INCH	3.5	3.5	2.0	2.0	2.0	8.0	33.86	33.86	1.50	23	26	3.74	22.8	22.8	8.7	22.8	44.1	21.3	9.5	
				MM	88.90	88.90	50.80	50.80	50.80	203.20	860.05	860.05	38.00	584.20	660.40	95.00	579.12	579.12	219.96	579.88	1120.00	540.00	241.81	

* Mold Height + Total Mold Opening Req'd. can not exceed Maximum Daylight



Maloney Tool and Plastics Press Specifications

